

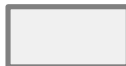
Service Layer Credits: Sources: Esri, HERE, Garmin, USGS, Intermap, INCREMENT P, NRCan, Esri Japan, METI, Esri China (Hong Kong), Esri Korea, Esri (Thailand), NGCC, © OpenStreetMap contributors, and the GIS User Community

**VERDUGO**  
Circuit Map

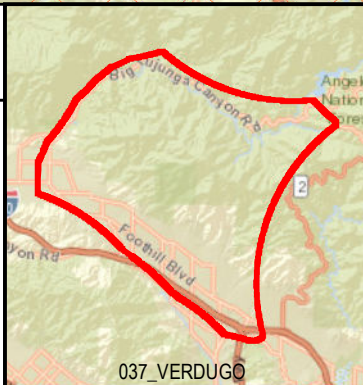
Los Angeles  
County



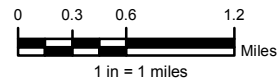
High Fire Risk Area



Outage Boundary



037\_VERDUGO



SCE has identified this area as containing distribution circuit(s) that provide electrical service to customers located in High Fire Risk Areas and may be subject to Public Safety Power Shutoffs (PSPS). Some circuits, as indicated on the map, may originate from, terminate in, or otherwise traverse High Fire Risk Areas, and the entire circuit may be subject to a PSPS event outage. While SCE's goal is to minimize the outage to affected areas during a PSPS event, various system design, operational, and environmental factors will affect how and when power is restored to these circuits or portions thereof.

The map was prepared on 4/23/2019 is subject to change at any time. All boundaries are approximate.

