

*WDAT 752 ISP*

*WDAT  
INDEPENDENT SYSTEM IMPACT STUDY*

*September 26, 2011*



*Prepared by:*

*Sergio Rodas  
Roger Salas, P.E.  
Distribution Field Engineering*

*Approved by:*

---

*Russ Ragsdale  
Distribution Field Engineering Manager*

*SOUTHERN CALIFORNIA EDISON COMPANY*

## EXECUTIVE SUMMARY

[REDACTED] applied to Southern California Edison ("SCE") for interconnection and wholesale distribution service for its proposed Solar Project pursuant to SCE's Wholesale Distribution Access Tariff ("WDAT") Generation Interconnection Procedures.

On January 29, 2010, SCE completed and issued a System Impact Study to [REDACTED]. The SIS study was for a 2.5MW generation facility connecting to an existing 12 kV distribution line ("Durox 12 kV"). The generation facility will be interconnected to SCE's distribution system on [REDACTED].

On May 27, 2011, SCE completed and issued a Facility Study to [REDACTED] for [REDACTED]. The Facility study was for a 2.5 MW generation facility connecting to an existing 12 kV distribution line ("Durox12 kV").

On March 31, 2011, [REDACTED] applied for an expansion of [REDACTED]. The expansion is for 1.0 MW(WDAT752ISP) for a total of 3.5 MW. The expansion was requested to be studied under SCE's WDAT Independent Study Process.

SCE performed an Independent System Impact Study as requested by [REDACTED] for the expansion of 1.0 MW to its existing WDAT 363 generation project. This interconnection will utilize the existing 12 kV switchgear currently serving SPVP 011, WDAT 363 which is connected to the existing Durox 12 kV distribution line out of Timoteo 66/12 kV Substation. The request is for service to commence by [REDACTED].

The expansion in generation, consisting of photovoltaic panels, [REDACTED] 500 kW [REDACTED] inverters, and [REDACTED] 500 kVA 0.208/12 kV transformers, would receive interconnection service from SCE's existing 12 kV circuitry on the Durox 12 kV out of Timoteo Substation via an underground line extension to the interconnection facility. The generated power would be delivered to the California Independent System Operator ("CAISO") grid at the 220 kV bus of SCE's San Bernardino Substation.

The purpose of this Independent System Impact Study is to determine the effect of the proposed generation addition on the SCE distribution system and the portion of SCE's electrical system that is part of the CAISO controlled grid, and to identify in general additional Interconnection Facilities, Distribution Upgrades, additions or modifications, or other facilities required to provide the requested service. The study was performed in two parts: Part A (performed by SCE's Distribution Field Engineering department) examines impacts related to that part of the SCE distribution system energized at less than 66 kV and also briefly summarizes the results of Part B, while Part B (performed by SCE's Generation Interconnection Planning department) examines impacts and facilities related to the portion of the SCE electrical system energized at 66 kV and above (the bulk power system), and impacts and facilities associated with the CAISO controlled portion of the SCE grid. This is the Part A study report; a detailed report of the Part B study results is included as Attachment B.

The Part A study was performed for expected year 2011 through 2020 projected peak load conditions as well as 2011 through 2020 minimum load conditions.

The Part A Independent System Impact Study consisted of a power flow analysis, three-phase short circuit duty analysis based on most current thevenin equivalents and circuit voltage profile analysis. The analyses were performed to determine whether the energy associated with the [REDACTED] Project can be transmitted through SCE's distribution system to the ISO grid at the 220 kV bus of San Bernardino Substation without creating the need for modifications to SCE's distribution system and/or to the ISO grid. The study showed that, with the [REDACTED] Project on-line:

- For both peak load and light load conditions, the expansion of the 1.0 MW to [REDACTED] project resulted in no violations of SCE's thermal loading criteria under base case and N-1 conditions for the SCE distribution System.
- The expansion of the 1.0 MW [REDACTED] project resulted in minimal voltage rise not exceeding allowable Rule 2 limits.
- The expansion of the 1.0 MW [REDACTED] project resulted in the increase of three phase short circuit duty at one (1) distribution substation. The circuit breaker interrupting capabilities were reviewed at these substation and it was determined that zero (0) circuit breakers will be required to be upgraded based on most current thevenin equivalents. The final results and financial responsibilities will be determined on the Cluster study process in accordance to the WDAT ISP study procedures.
- Since the project is connecting on the SCE distribution system and the project consist of inverter facilities which have limited short-circuit duty contribution, the SCD analysis determined there were no impacts on SCE's transmission-voltage bulk power system due to the addition of this generation project.
- The power flow study results did not identify any impact on SCE bulk system serving the subtransmission system where the project is interconnected. In addition, the study identified that the inclusion of the project did not require any modification to existing Special Protection System (SPS).

- Non-binding order of magnitude cost estimates for the required interconnection facilities and system upgrades are as follows:

**Distribution Upgrades**

No Distribution Upgrades required \$0.0 K<sup>1</sup>

**Interconnection Facilities**

No Interconnection Facilities required \$0.0 K

---

Total non-binding order of magnitude cost estimate \$0.0 K

---

<sup>1</sup> Final breaker analysis and cost responsibility will be conducted under the cluster process in accordance with WDAT ISP

## CONTENTS

	<u>PAGE</u>
<b>I. INTRODUCTION TO PART A</b>	6
<b>II. PART A: INDEPENDENT SYTEM IMPACT STUDY CONDITIONS &amp; METHODOLOGY</b>	7
<b>III. PART A: INDEPENDENT SYSTEM IMPACT STUDY RESULTS</b>	7
<b>IV. PART A: GENERAL DESCRIPTION OF IDENTIFIED UPGRADES</b>	9
<b>V. PART A: NON-BINDING ORDER OF MAGNITUDE COST ESTIMATE</b>	10
<b>VI. PART A: SUMMARY</b>	11
<b>Attachment A: Part A: SYSTEM DIAGRAMS</b>	
• <b>A1 – System without proposed project</b>	
• <b>A2 – System with proposed method of service</b>	

## I. INTRODUCTION TO PART A

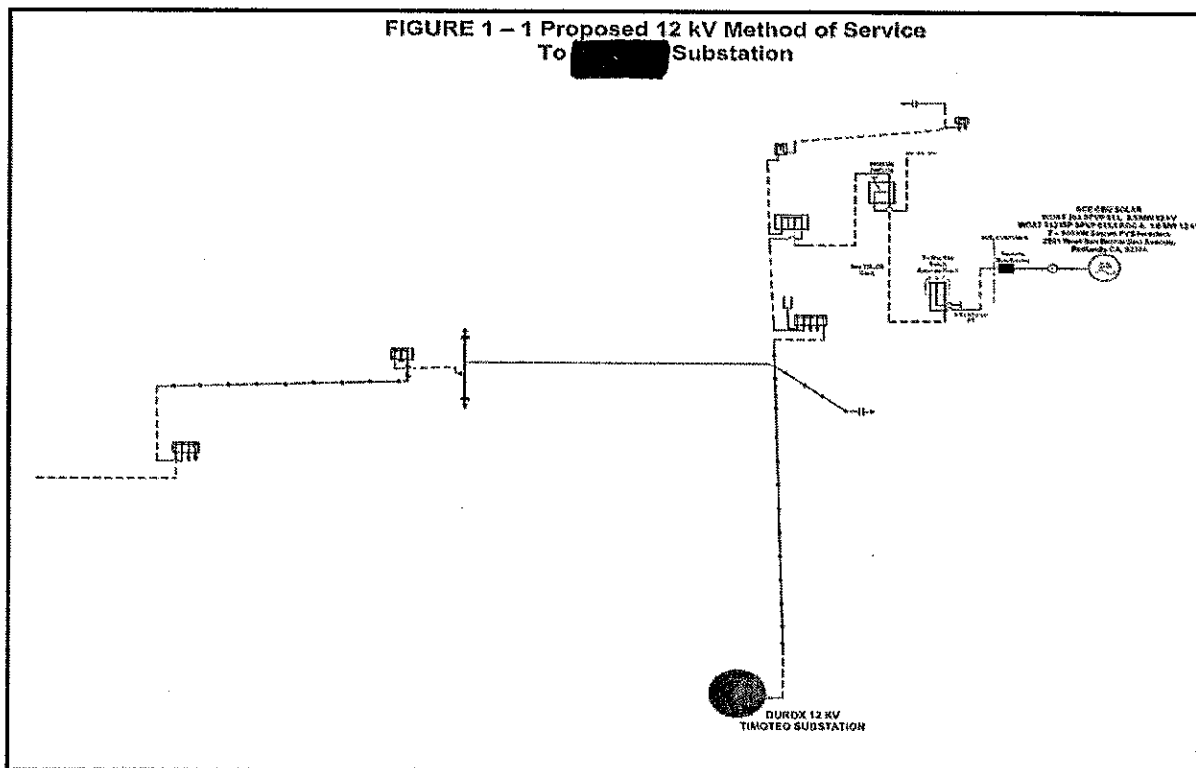
[REDACTED] applied to Southern California Edison ("SCE") for interconnection and wholesale distribution service for its proposed Solar Project pursuant to SCE's Wholesale Distribution Access Tariff ("WDAT") Generator Interconnection Procedures.

On January 29, 2010, SCE completed and issued a System Impact Study to [REDACTED] for [REDACTED]. The SIS study was for a 2.5MW generation facility connecting to an existing 12 kV distribution line ("Durox 12 kV"). The generation facility will be interconnected to SCE's distribution system on October 5, 2011.

On May 27, 2011, SCE completed and issued a Facility Study to [REDACTED] for [REDACTED]. The Facility study was for a 2.5 MW generation facility connecting to an existing 12 kV distribution line ("Durox12 kV").

On March 31, 2011, [REDACTED] applied for an expansion of WDAT 363. The expansion is for 1.0 MW(WDAT752ISP) for a total of 3.0MW. The expansion was requested to be studied under SCE's WDAT Independent Study Process.

SCE performed an Independent System Impact Study as requested by [REDACTED] for the expansion of 1.0 MW to its existing WDAT 363 generation project. This interconnection will utilize the existing 12 kV switchgear currently serving SPVP 011, WDAT 363 which is connected to the existing Durox 12 kV distribution line out of [REDACTED]. The request is for service to commence by October 5, 2011.



The expansion in generation, consisting of photovoltaic panels, [REDACTED] inverters, and [REDACTED] transformers, would receive interconnection service from SCE's existing 12 kV circuitry on the Durox 12 kV out of Timoteo Substation via an underground line extension to the interconnection facility. The generated power would be delivered to the California Independent System Operator ("CAISO") grid at the 220 kV bus of SCE's San Bernardino Substation.

The purpose of this Independent System Impact Study is to determine the impact of the proposed generation addition on the SCE distribution system and to identify in general additional Interconnection Facilities, Distribution Upgrades, additions or modifications, or other facilities required to provide the requested service. This study was performed for expected year 2011 through 2020 peak load conditions as well as low demand conditions.

## **II. PART A: SYSTEM IMPACT STUDY CONDITIONS & METHODOLOGY**

### **Planning Criteria**

The thermal rating of any conductor, connector, or apparatus should not exceed 100% of its normal rated capacity with all facilities in service (base case).

The thermal rating of any conductor, connector, or apparatus should not exceed 100% of its emergency rating under N-1 conditions.

Operational flexibility and reliability of the distribution system shall be maintained at all times.

Circuit voltage profiles should be maintained to comply within CPUC's Rule 2 requirements.

### **System Conditions**

The power factor for the new generation facility was assumed to be within WDAT requirements of 0.95 lagging or leading.

Expected loading on the distribution system as projected by the SCE 2011 - 2020 plan was used.

Distributed Generation resources connected to the distribution system are analyzed offline and online during peak load conditions as well as during minimum daytime load conditions as to determine worst case scenario.

The Short circuit contribution from the inverter systems was determined using inverter manufacturer datasheets.

Thevenin equivalents for this study are based on most current thevenin equivalents. Final Short circuit study and cost responsibilities for breaker upgrades will be conducted in the cluster process in accordance with WDAT ISP.

## **III. PART A: SYSTEM IMPACT STUDY RESULTS**

### **Short Circuit Analysis**

Using the short circuit models from the inverter systems being utilized in this solar generation system, it was calculated that the short circuit contribution at [REDACTED] 12 kV substation bus was

more than 0.1 kA; thus a breaker analysis was required due to this generation. The circuit breaker analysis concluded that zero (0) 12 kV breakers replacements are required as part of this project.

### **System Protection Considerations**

With this proposed method of service, no changes to the protection system of the SCE electrical system are required.

### **Thermal Loading**

The line section of the Durox 12 kV between the customer's facility and the 12 kV Point of Interconnection is expected to experience an incremental reverse power flow of approximately 1.0 MW during minimum loading. Of that 1.0 MW, approximately 1.0 MW will flow back into the 12 kV bus at Timoteo 66/12 kV Substation during minimum loading due to the absorption of the power flow by the local load. In aggregate to existing generation projects ahead in the queue, approximately 1.35 MW of generation will flow back into the 12 kV bus at Timoteo 66/12 kV substation.

### **Distribution Voltage Control**

The section of the Durox 12 kV near the project area is expected to experience voltage rise of 0.16%, which would not exceed the allowable CPUC Rule 2 requirements as a result to the addition of the 1.0 MW [REDACTED] project under the generating facilities conditions of maximum generation and unity power factor

### **Harmonic impact**

The harmonic impact of the subject inverter based generation was not part of this System Impact Study. Despite the relatively low THD (<3%) of the equipment, impacts on voltage distortion levels may be significant due to the high penetration level of the generation facility with respect to the local distribution grid strength. As with all equipment connected to the SCE distribution system, the generation project will be subject to the provisions of Rule 2.E, allowing SCE to require customer mitigation of interference with SCE service, including harmonic impacts, if harmonic interference is caused by the customer. Since the THD values which were provided are for individual inverters and not for the total generation requested, it will be required to determine the total harmonic contribution for the entire generation facility prior to approving the generation to interconnect to the SCE distribution system. Given the amount of generation and the strength of the distribution system, SCE will not require a harmonic study but strongly encourages that the applicant completes a harmonic study prior to interconnection. During the commissioning test of the generation system, SCE will be part of the commissioning test, install power quality equipment to verify that the total harmonic contribution from the generation system to the SCE meets the required standards. If during the commissioning test, it is found that the projects do not meet the harmonic standards, the project will not be allowed to interconnect to the SCE system until the harmonic deviations are rectified. Therefore, it is encouraged that the applicant completes a harmonic study during the Facility Study to insure that the harmonic requirements are met. If the applicant chooses to complete a harmonic study, SCE will then provide the required SCE distribution system data that are to be used as part of the harmonic study.



## **IV. PART A: GENERAL DESCRIPTION OF IDENTIFIED UPGRADES**

### **Distribution Upgrades**

No Distribution Upgrades are required to interconnect this generation facility

### **Interconnection Facilities**

No Interconnection Facilities are required to interconnect this generation facility.

### **Customer Equipment**

The interface protection will be provided by the applicant and will include a 12 kV circuit breaker which was installed at the applicant-owned 12 kV switchgear. The applicant's protection has been coordinated with SCE's Timoteo Substation circuit breaker controls to provide adequate protection for the distribution system. The relay settings have been reviewed and approved by SCE and a certified timed trip testing report was provided to SCE prior to energizing the switchgear.

The switchgear met SCE's published Electrical Service Requirements ("ESR. Drawings required by the ESR shall where submitted, reviewed, modified, and approved by SCE prior to release for fabrication/purchase of the equipment.

Applicant generation interconnection equipment must comply with SCE's Interconnection Handbook in regards to generation protection and lockable-visible disconnecting means at the point of interconnection.

### **Independent System Study**

An Independent Facilities Study will NOT be required as there are no additional facilities needed to be installed in order to allow the expansion project to interconnect.

## V. NON-BINDING ORDER OF MAGNITUDE COST ESTIMATE

- Non-binding order of magnitude cost estimates for the required interconnection facilities and system upgrades are as follows:

### Distribution Upgrades

No Distribution Upgrades required	\$0.0 K <sup>1</sup>
-----------------------------------	----------------------

### Interconnection Facilities

No Interconnection Facilities required	\$0.0 K
--	---------

---

Total non-binding order of magnitude cost estimate	\$0.0 K
--	---------

---

<sup>1</sup> Final breaker analysis and cost responsibility will be conducted under the cluster process in accordance with WDAT ISP

## VI. PART A: SUMMARY

The Part A Independent System Impact Study showed:

1. No Distribution upgrades will be required to interconnection the generation system.
2. No Interconnection facilities will be required to interconnect the generation system.
3. Real time telemetry will be required. RTU and DGP installed under WDAT 347 will be used to provide the telemetry requirements.
4. Non-binding order of magnitude cost estimates for the required interconnection facilities and system upgrades are as follows:

System Upgrades and Interconnection Facilities are as follows:

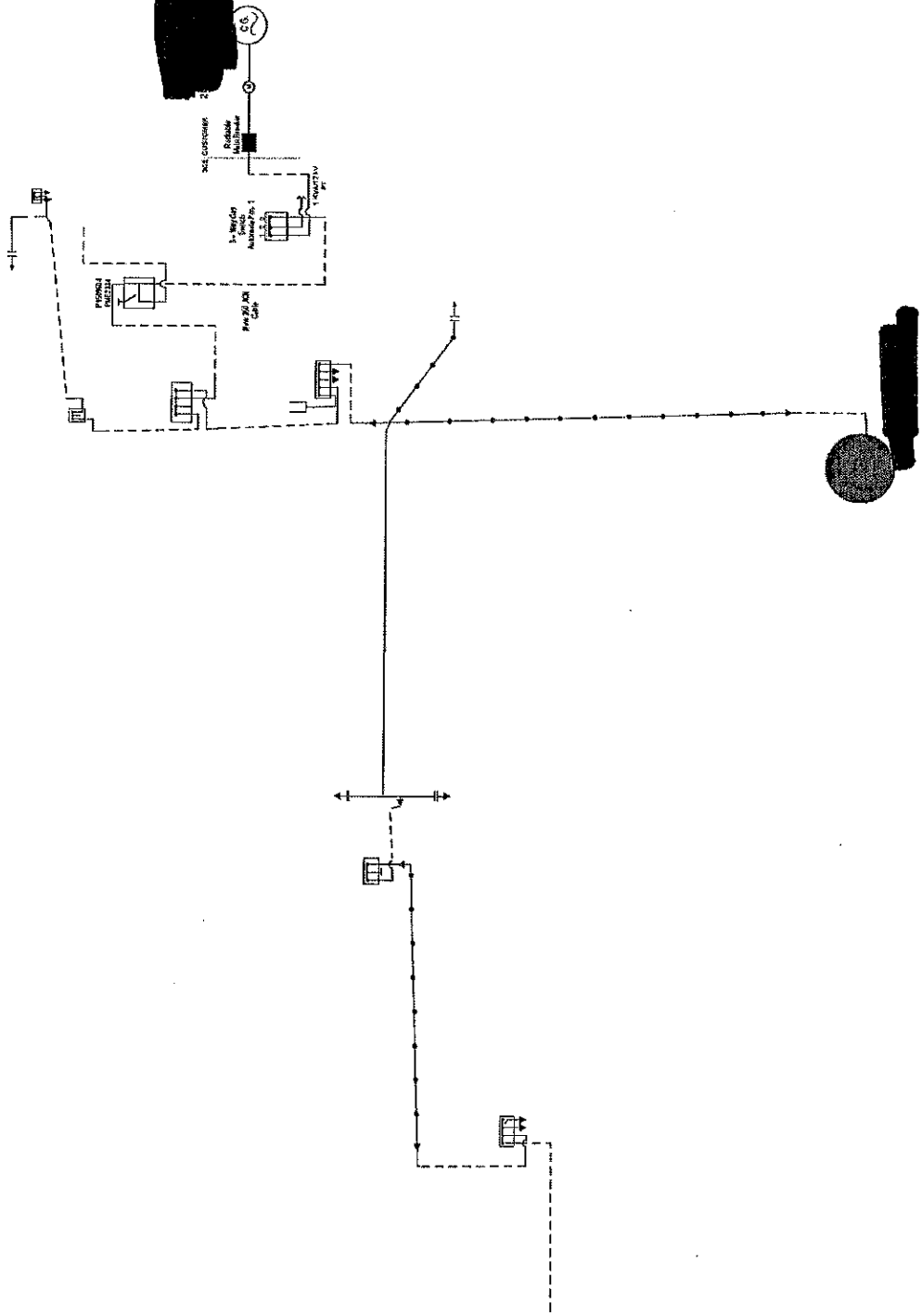
Distribution Upgrades	\$0.0 K <sup>1</sup>
Interconnection Facilities	\$0.0K
<hr/>	
Total non-binding order of magnitude cost estimate	\$0.0 K

5. This Independent System Impact Study is based on various technical data previously provided by the applicant. If any of that information changes significantly, as determined by SCE, the results of this study may no longer be appropriate and may necessitate a new study.
6. The Independent System Impact Study is based on applicant's queue position. Additional studies may be needed if any changes occur in the projects ahead in the queue.
7. Final breaker analysis and cost responsibility will be conducted under the cluster process in accordance with WDAT ISP

---

<sup>1</sup> Final breaker analysis and cost responsibility will be conducted under the cluster process in accordance with WDAT ISP

**ATTACHMENT #1**  
**System Without Proposed Project**





## **ATTACHMENT B – BULK POWER SYSTEM IMPACT STUDY REPORT**

### **CAISO Controlled Bulk System**

#### **Short Circuit Duty**

Since the project is connecting on the SCE distribution system and the project consist of inverter facilities which have limited short-circuit duty contribution, the SCD analysis determined no impact on SCE's high-voltage bulk power system after inclusion of the project.

#### **Power Flow Study**

The power flow study analysis focus on identifying system thermal overload problems within SCE bulk system. The power flow study results did not identify any impact on SCE bulk system serving the subtransmission system where the project is interconnected. In addition, the study identified that the inclusion of the project didn't require any modification to existing Special Protection System (SPS).