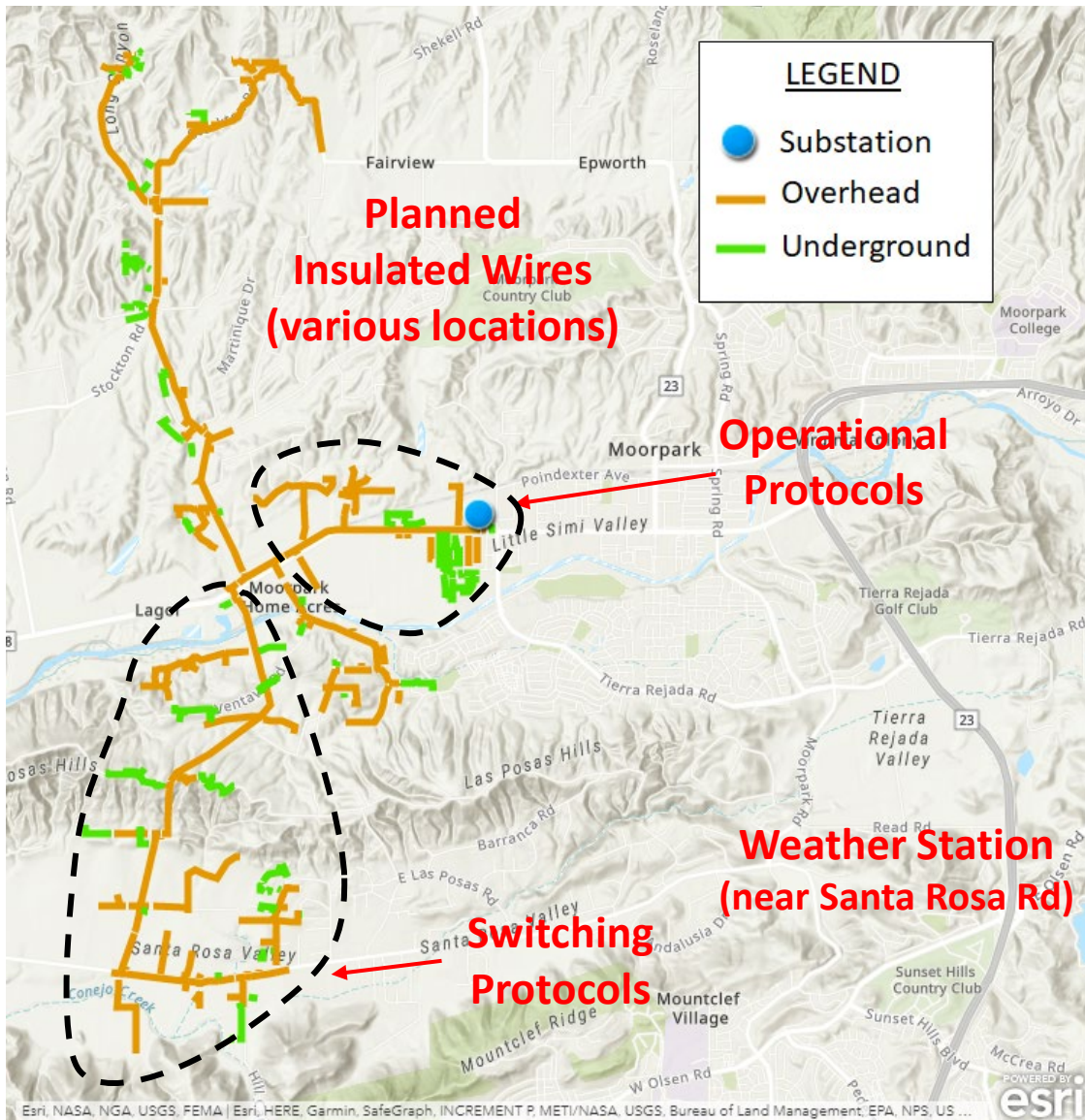


# ZONE CIRCUIT PLAN



## Planned Work:

- Replace 14.2 miles of existing overhead wire with new insulated wire
- Implement operational protocols to raise PSPS windspeed thresholds near substation
- Implement switching protocols to transfer load to a less affected circuit
- Install an additional weather station

## Expected Improvements:

- **45% reduction** in customer outage time, assuming the same weather conditions in 2020