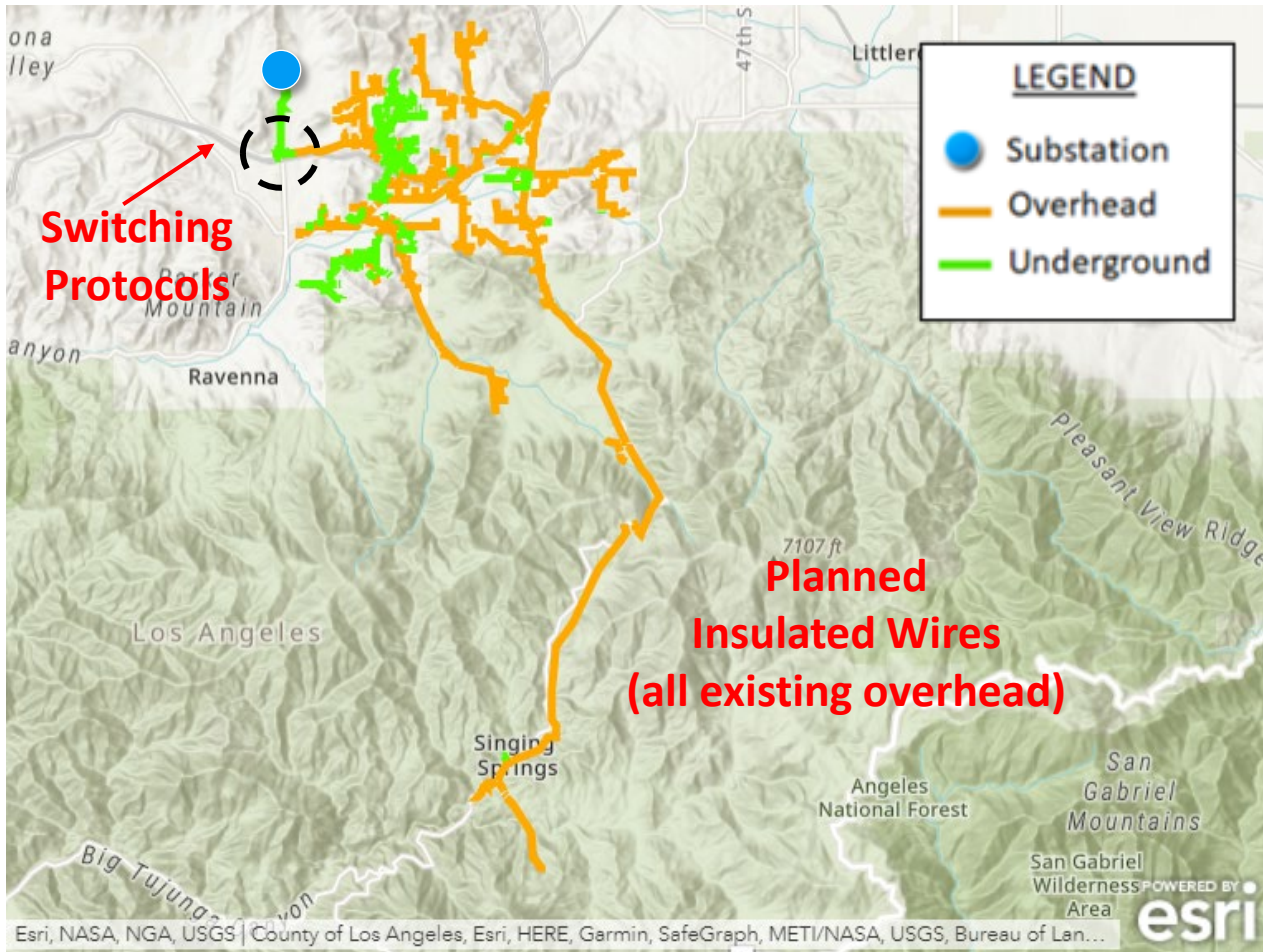


# Bootlegger Circuit Plan



## Planned Work:

- Insulated Wires: Replace 27.6 miles of existing overhead wire with new insulated wire
- Switching Protocols: Implement switching protocol to remove some customers and critical businesses from PSPS

## Expected Improvements:

- **100% reduction** in customer outage time, assuming the same weather conditions in 2020